



MASTER SPAS CARES FOR CURES

Master Spas is pleased and proud to assist two foundations dedicated to finding and funding the cures for life-hindering diseases.



Along with the Lupus Foundation of America, we have initiated a campaign to help raise awareness and find a cure for this debilitating disease that affects more than 1.5 million Americans. Part of the profit from each "Lights for Lupus" spa model will go to the Lupus Foundation. Together, we can fund and find the cure.



Master Spas has joined forces with the Vera Bradley Foundation for Breast Cancer to eradicate breast cancer, a life-threatening disease, by providing financial support for research and research-related projects.

CARES FOR KIDS



Master Spas and their dealers were part of building a new school complex in 2013 for the NAZ Children's Centre in Rose Hall, Jamaica. This specialized school does an outstanding job with children ages 4-11, as well as working with children with developmental problems. With every Master Spas Swim Spa sold, a donation will be made to the NAZ Children's Centre Scholarship Fund.

For more information, visit MasterSpas.com/cares

WATCH VIDEO



▲ SEE THE
MASTER SPAS
ADVANTAGE



Clarity Spas are manufactured by Master Spas, one of the world's leading spa manufacturers.

www.ClaritySpas.com



6927 Lincoln Parkway, Fort Wayne Indiana 46804 • 260 436 9100

Master Spas reserves the right to change product specifications or features without notice. Master Spas is a manufacturer of spas and related products, and we stand behind every product we produce pursuant to those representations which are stated in our written limited warranty. Your dealer is an independent businessperson or company and not an employee or agent of Master Spas, Inc. We cannot and do not accept any responsibility or liability for any other representations, statements or contracts made by any dealer beyond the provisions of our written limited warranty.

LITCS2014-11 © Master Spas, Inc. sales@masterspas.com



MIND BODY SPIRIT

Think clearer. Focus on the moment.
Quiet the noises. Worry less.



Enter a realm of calm.

WATCH VIDEO



CLARITY SPAS





Relax. The choice is clear.

A Clarity Spa gives you the luxury of a high-end day spa with even more privacy and peace of mind. Clarity will entice your senses and fulfill your expectations. Most Clarity Spas feature dual, high-performance pumps providing amazing therapy treatment...adjustable LED lighting creates a soothing cascade of color options...and the optional Fusion Sound System completes the sensory experience allowing you to put on your favorite, relaxing music. Clarity Spas are the most delightful on the market and the perfect place to find your Zen whenever you need it.



The calm that gives you strength.

With Clarity comes serenity — that gentle, overall sensation of comfort and security. The calm that gives you strength.

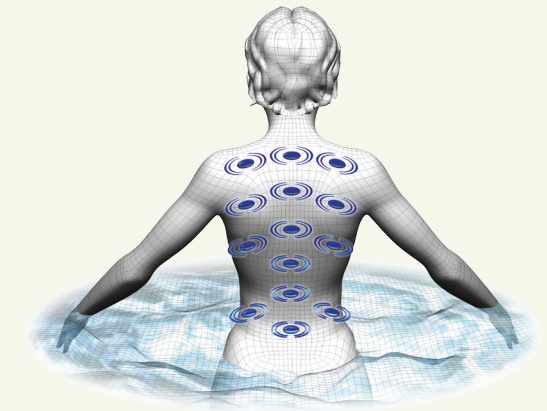
Here, you can nestle into the luxury of Clarity's ergonomic seats and surrender to the fully adjustable massage jets. Enjoy the soothing relief of the StressRelief™ Neck and Shoulder Collar jets* and the strategic placement of up to 55 therapeutic jets* designed to target key pressure points, improve circulation and restore your natural sense of wellness.



Clean, Pure Water

Our patented EcoPur® Filtration System keeps the water sparkling clean and assures that the quality of your water is superior to all industry standards. The EcoPur® system uses the same multi-stage filtration techniques as Mother Nature, a unique blend of copper and zinc that creates an electro-chemical reaction to eliminate many microorganisms and remove heavy metals such as lead and mercury, giving you great peace of mind.

* Individual models vary.



Bio-Magnetic Therapy

Used for centuries to help relieve pain, improve circulation, reduce swelling and alleviate stiffness, magnetic therapy is being reborn in the world of modern medicine. More doctors and physical therapists now use magnetic therapy for the treatment of back problems, arthritis, and sports injuries. As a result, nearly 70 percent of all professional athletes use magnetic therapy for pain relief and performance enhancement.

Our patented Master Force™ Bio-Magnetic Therapy System applies strategically placed magnets to pressure points behind the neck, shoulder, and back in a seat with powerful adjustable jets to deliver massaging, therapeutic relief for an effective, holistic approach to your total health.

Options

Match the color of your spa with the skirting of your choice for a distinctive combination that's truly your own. Choose from the standard DuraMaster Premium™ polymer skirting or the MasterTech™ skirt that has the look of real wood, but is virtually maintenance free.

SKIRT OPTIONS

STANDARD DuraMaster Premium™



Portabello Espresso

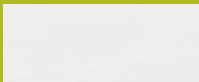
OPTIONAL MasterTech Premium Synthetic Skirting



Walnut Grove Driftwood

SHELL OPTIONS

STANDARD COLOR

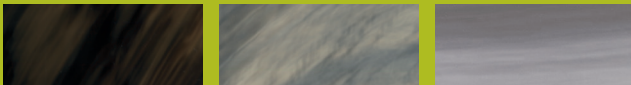


White Acrylic*

PREMIUM COLORS



Sterling Silver Sierra Oceanwave Opal



Midnight Canyon Tuscan Sun Storm Clouds



Silk Cameo

*White Acrylic is the standard color for all models except the CLS 1055 (only available in Sterling Silver).



F FUSION SOUND SYSTEM

Most Clarity Spas may be equipped with an optional sound system so you can listen to your favorite music while rejuvenating your body and mind.

Deluxe Fusion Air Sound System includes BlueTooth capability for streaming your favorite music plus an FM Tuner controlled through the water resistant remote control. It also includes four marine grade speakers, and a subwoofer.

Fusion Air Sound System includes BlueTooth capability for streaming your favorite music through two marine grade speakers.

W WI-FI MODULE

Remotely control the operations of your spa via an optional integrated Wi-Fi module that works with the Balboa Water Group Wi-Fi Spa Control App.

S STAINLESS STEEL JETS

Optional stainless steel jets are available for all Clarity Spas.



CLS 415*

Dimensions:	50" x 85" x 29" (127 cm x 216 cm x 74 cm)
Weight (Dry/Full):	425 lbs / 1925 lbs
Gallons:	135
Pumps:	1
Filtration:	20 sq. ft.
Number of jets:	15
Seating capacity:	2
Waterfall:	–
LED Lighting:	Colorscape Light
Options:	S

*120V Plug-in, standard skirting only.

Note: Spas are shown with optional stainless steel jets.



CLS 524

Dimensions:	66" x 84" x 32" (168 cm x 213 cm x 81 cm)
Weight (Dry/Full):	515 lbs / 2865 lbs
Gallons:	215
Pumps:	1
Filtration:	EcoPur®
Number of jets:	24
Seating capacity:	3
Waterfall:	1
LED Lighting:	Colorscape Light
Options:	W S



CLS 730

Dimensions:	84" x 84" x 36" (213 cm x 213 cm x 91 cm)
Weight (Dry/Full):	630 lbs / 4720 lbs
Gallons:	335
Pumps:	1
Filtration:	EcoPur®
Number of jets:	30
Seating capacity:	7
Waterfall:	–
LED Lighting:	Colorscape Light
Options:	F W S



CLS 730L

Dimensions:	84" x 84" x 36" (213 cm x 213 cm x 91 cm)
Weight (Dry/Full):	660 lbs / 4525 lbs
Gallons:	330
Pumps:	1
Filtration:	EcoPur®
Number of jets:	30
Seating capacity:	6
Waterfall:	–
LED Lighting:	Colorscape Light
Options:	F W S



CLS 738

Dimensions:	84" x 84" x 36" (213 cm x 213 cm x 91 cm)
Weight (Dry/Full):	670 lbs / 4805 lbs
Gallons:	340
Pumps:	2
Filtration:	EcoPur®
Number of jets:	38
Seating capacity:	7
Waterfall:	1
LED Lighting:	Waterline Lights
Options:	F W S

Note: Spas are shown with optional stainless steel jets.



CLS 738L

Dimensions:	84" x 84" x 36" (213 cm x 213 cm x 91 cm)
Weight (Dry/Full):	700 lbs / 4605 lbs
Gallons:	335
Pumps:	2
Filtration:	EcoPur®
Number of jets:	38
Seating capacity:	6
Waterfall:	1
LED Lighting:	Waterline Lights
Options:	F W S



CLS 855

Dimensions:	94" x 94" x 36" (239 cm x 239 cm x 91 cm)
Weight (Dry/Full):	775 lbs / 5660 lbs
Gallons:	430
Pumps:	2
Filtration:	EcoPur®
Number of jets:	55
Seating capacity:	7
Waterfall:	1
LED Lighting:	Waterline Lights
Options:	F W S



CLS 855L

Dimensions:	94" x 94" x 36" (239 cm x 239 cm x 91 cm)
Weight (Dry/Full):	750 lbs / 5155 lbs
Gallons:	395
Pumps:	2
Filtration:	EcoPur®
Number of jets:	55
Seating capacity:	6
Waterfall:	1
LED Lighting:	Waterline Lights
Options:	F W S



CLS 1055*

Dimensions:	94" x 120" x 39" (239 cm x 305 cm x 99 cm)
Weight (Dry/Full):	970 lbs / 7350 lbs
Gallons:	565
Pumps:	2
Filtration:	EcoPur®
Number of jets:	55
Seating capacity:	9
Waterfall:	1
LED Lighting:	Waterline Lights
Options:	F W S

*Only available with a Sterling Silver shell.

Note: Spas are shown with optional stainless steel jets. CLS 855 and CLS 855L are shown with optional Deluxe Fusion Air Sound System.